

## **Installation and user guide for E55 Apk Calibration.**

This user manual is to guide the personnel of Service Center to operate the Apk Calibration for E55

Calibration apk is needed to perform calibration of hardware components including Proximity Sensor, Light sensor and Accelerometer on E55 devices.

This manual will describe the operation steps of calibration in sequence of Accelerometer, Proximity Sensor and Light sensor.

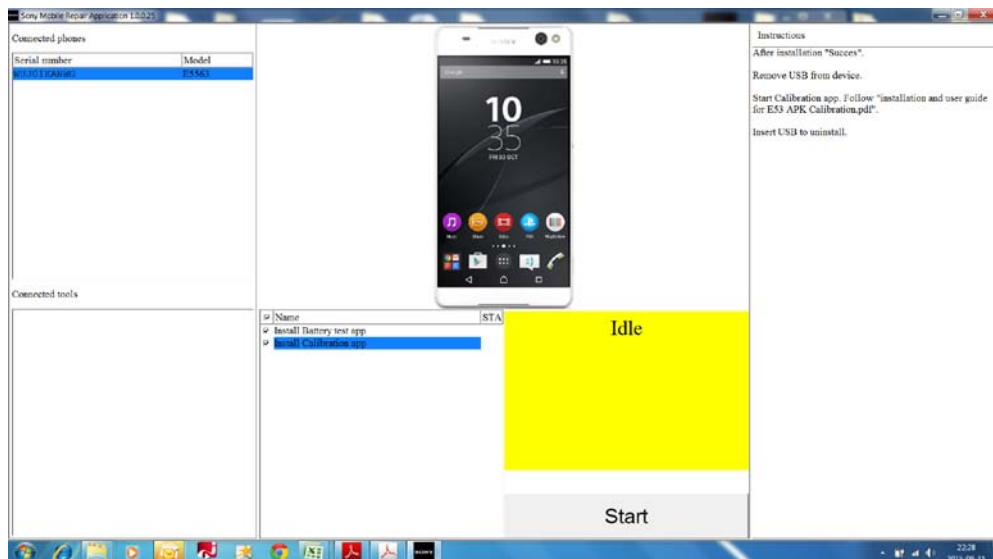
**Contents**

1	Operations.....	3
2	Install APK.....	3
3	Accelerometer .....	5
4	Proximity Sensor .....	7
5	Light Sensor .....	11
6	Uninstall APK .....	13
7	Disable debug mode.....	14

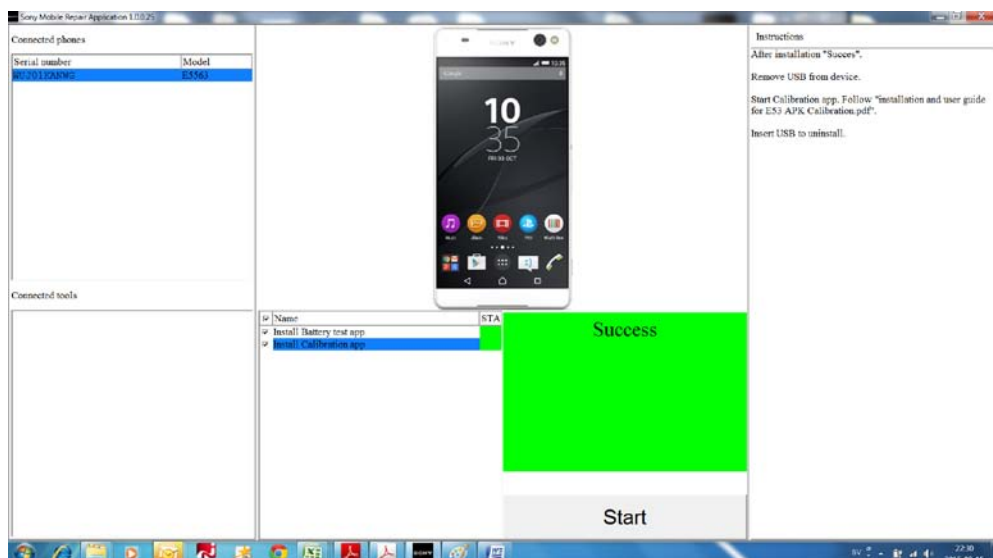
# 1 Operations

## 2 Install APK

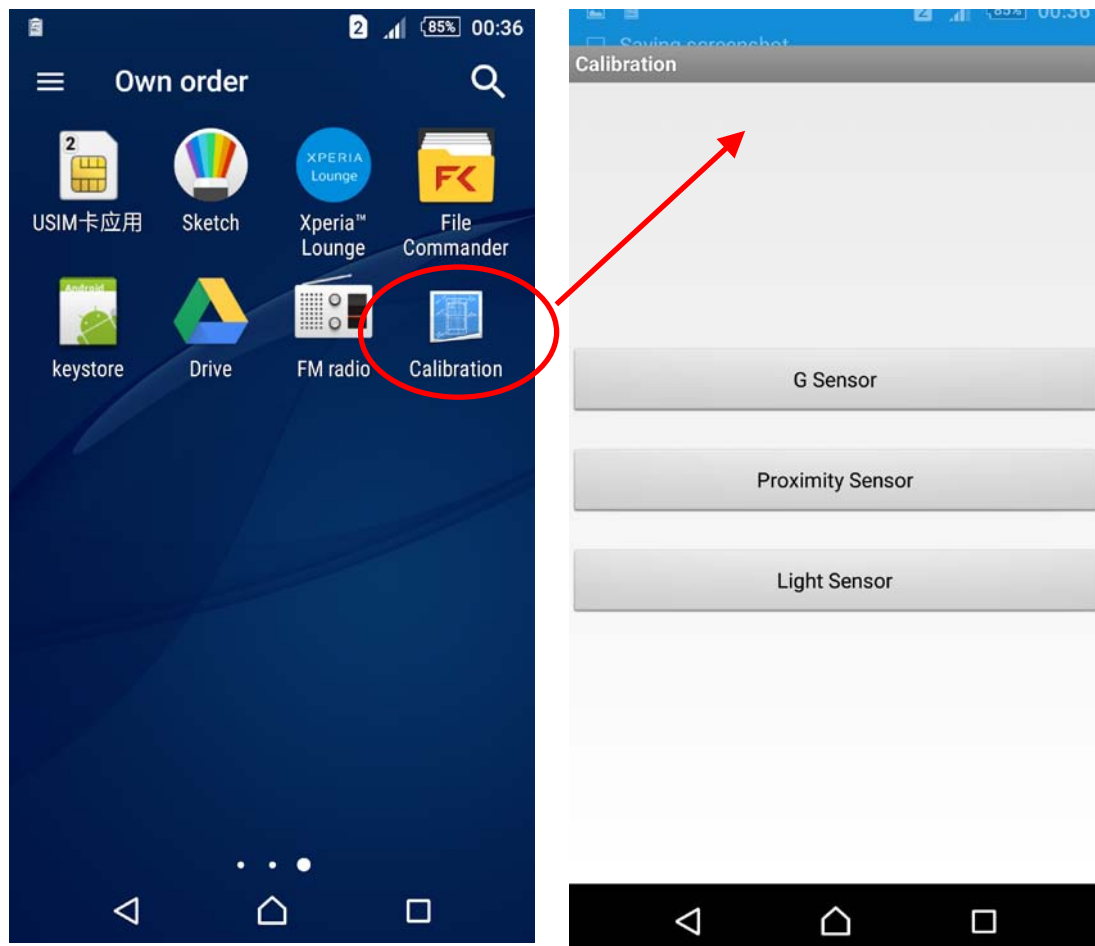
Enable USB debug mode in phone and connect to Sony Mobile Repair Application



Press **Start** to install Calibration app.  
When Success installation, then remove USB from device.

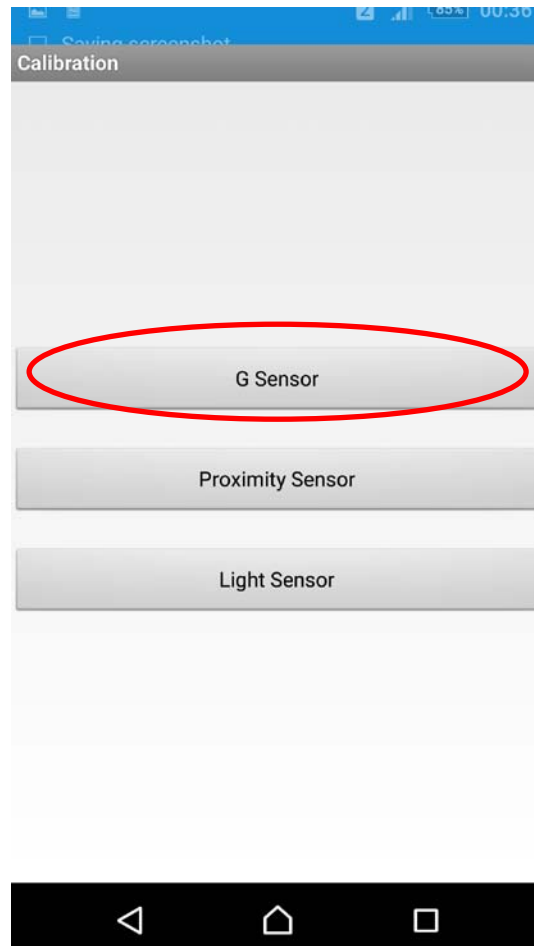


Press Calibration to enter Calibration menu.



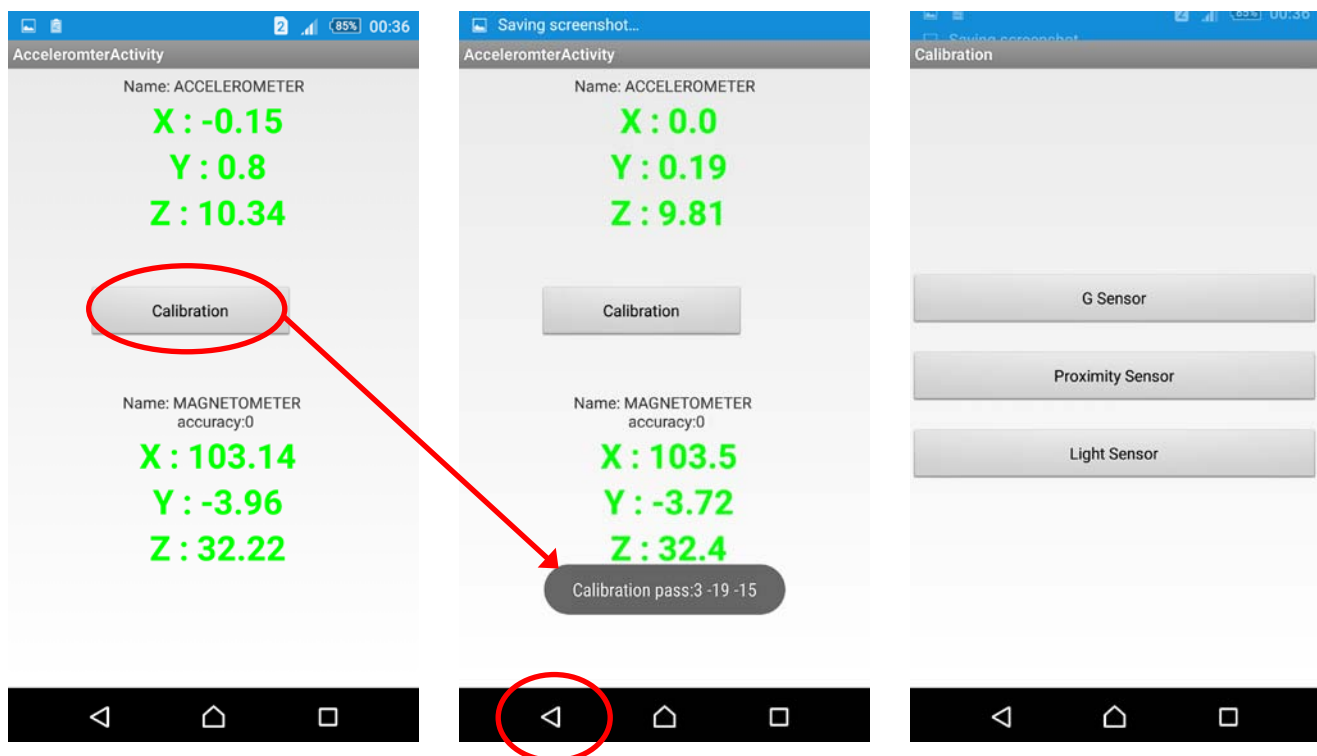
### 3 Accelerometer

- (1) Select "G Sensor" item in calibration main menu to enter the main page of Accelerometer/Compass calibration.



(2) Place the device on stable and horizontal flat plane (e.g. table).

(3) Press button “Calibration” and the calibration process will start.  
Please do not move the device during the calibration procedure.

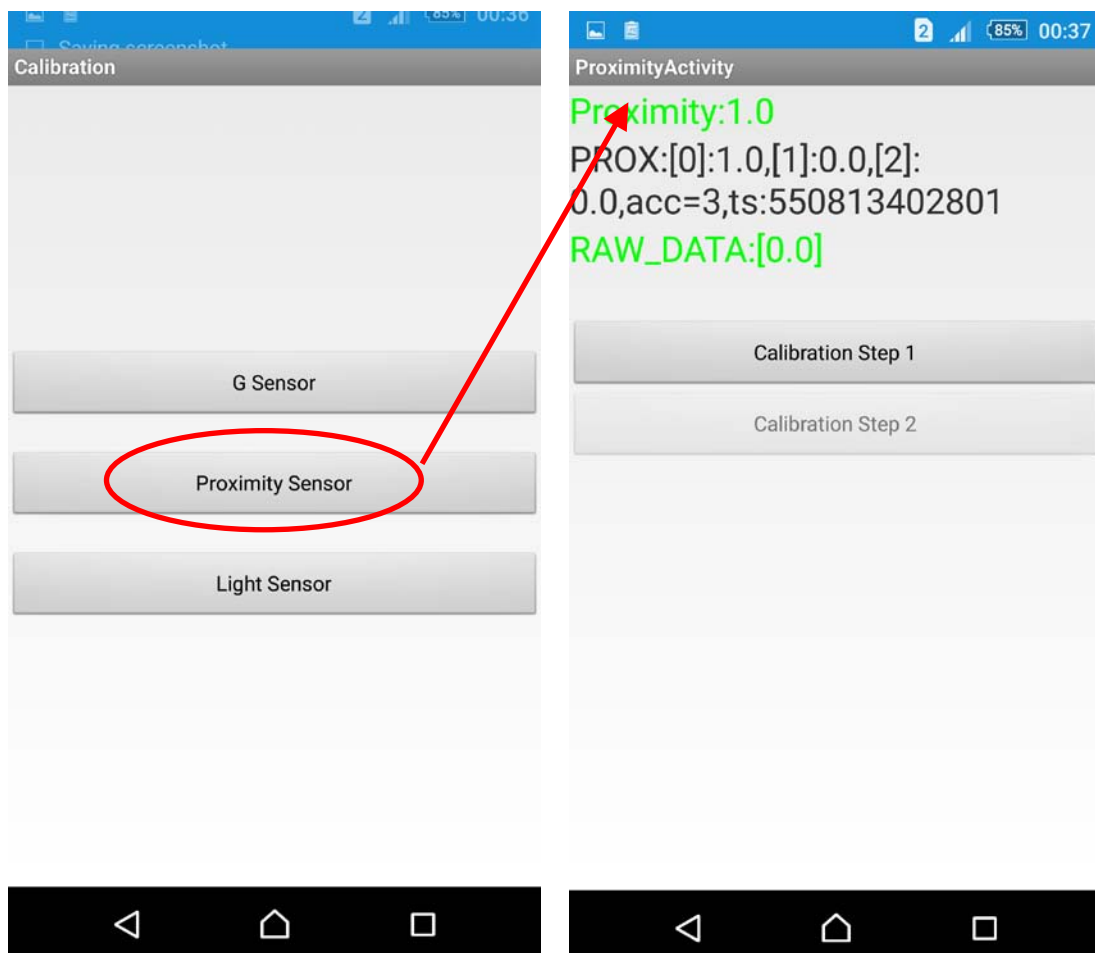


(4) As calibration completed, the result screen will be presented.  
If the calibration pass, press return to enter main menu

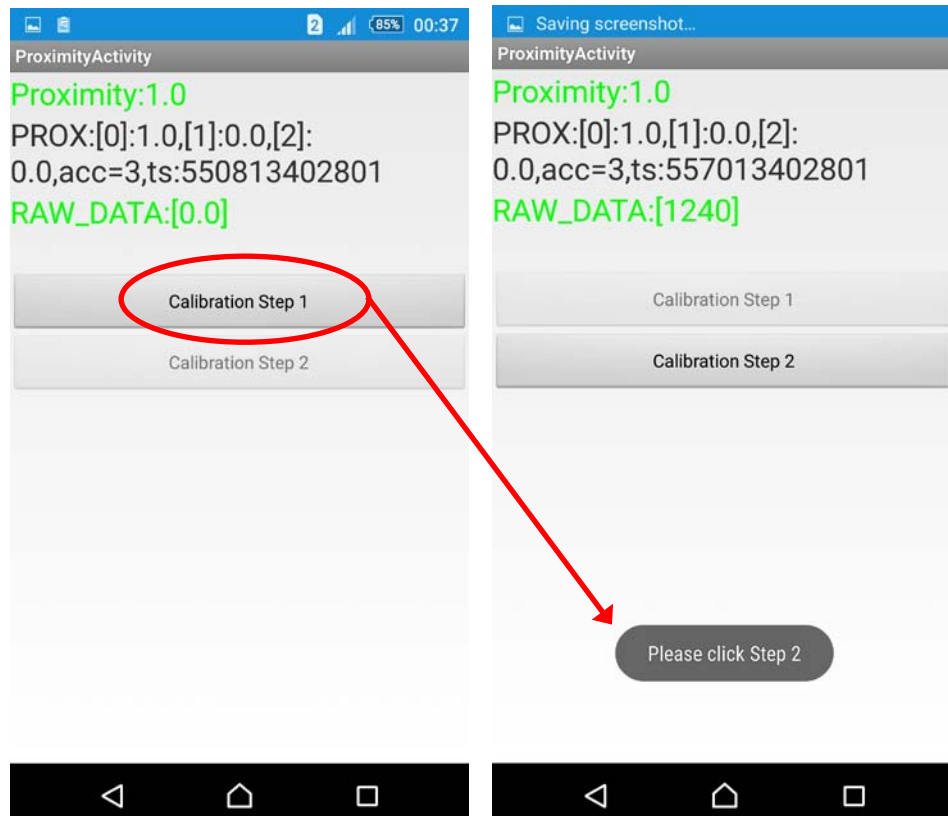
## 4 Proximity Sensor

- (1) Please note, no Proximity fixture needed in this calibration.  
Default values will be written to memory.

- (2) Select “Proximity Sensor” item in calibration main menu to enter the page of Proximity Sensor.

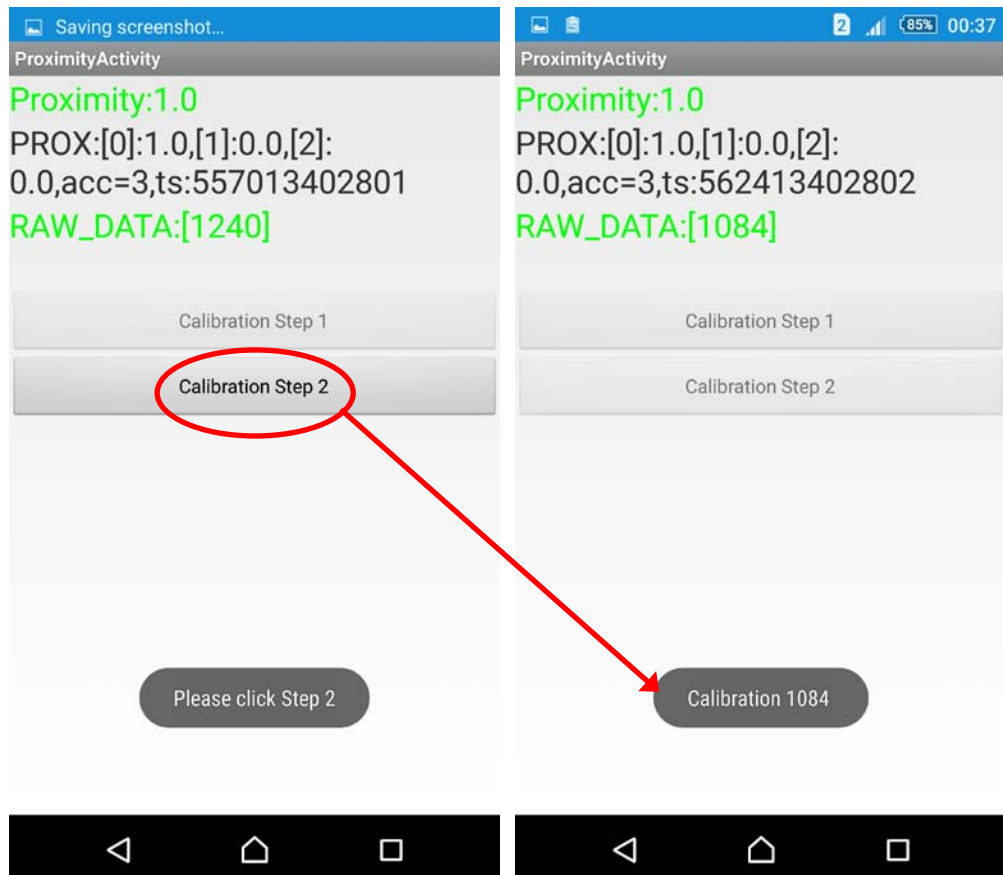


(3) Press button “Calibration STEP1” and the calibration process will start.

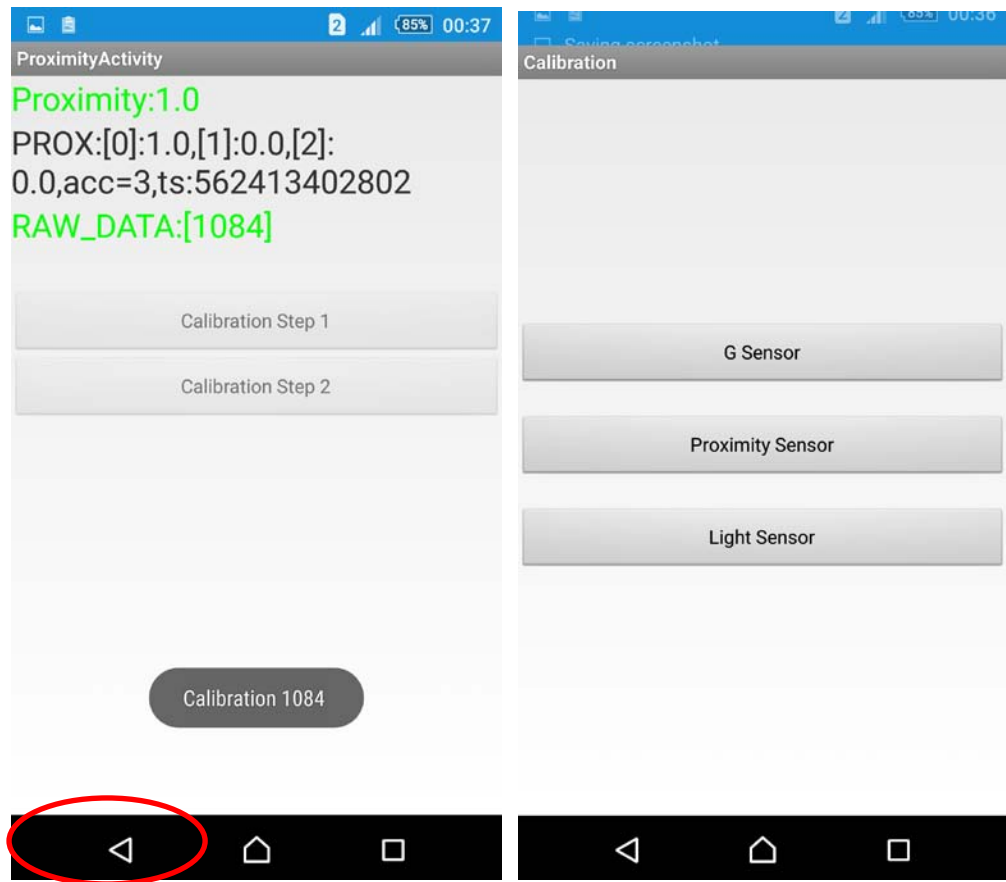


(4) As calibration completed, (Please click Step 2) will pop up.





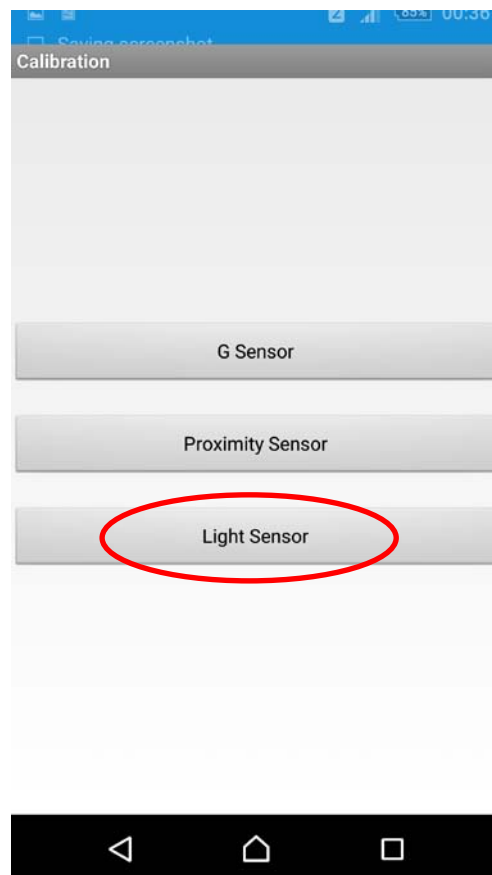
(5) Press button "Calibration Step 2" and the calibration process will start. As calibration completed, the result screen will be presented.



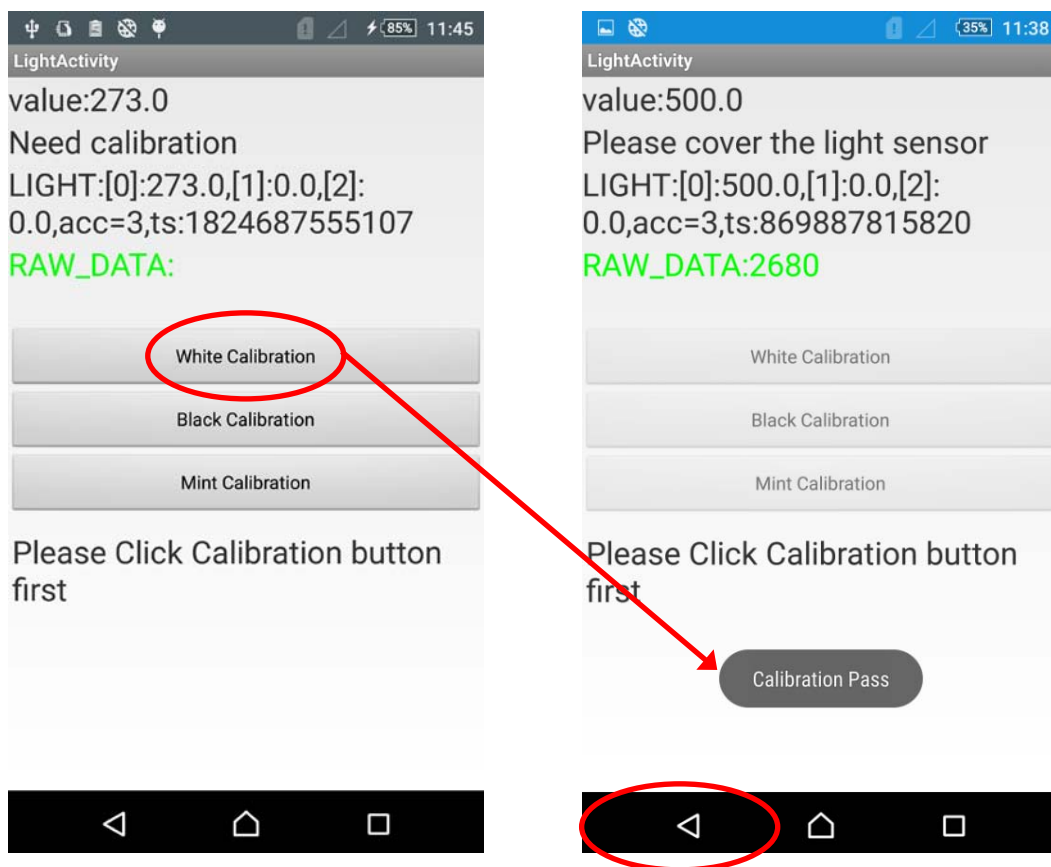
(6) Press return to enter main menu.

## 5 Light Sensor

- (1) Select “Light Sensor” item in calibration main menu to enter the main page of Light Sensor calibration.



- (2) Press button "White Calibration" to set default value if white colour touch panel or  
Press button "Black Calibration" to set default value if black colour touch panel or  
Press button "Mint Calibration" to set default value if mint colour touch panel.

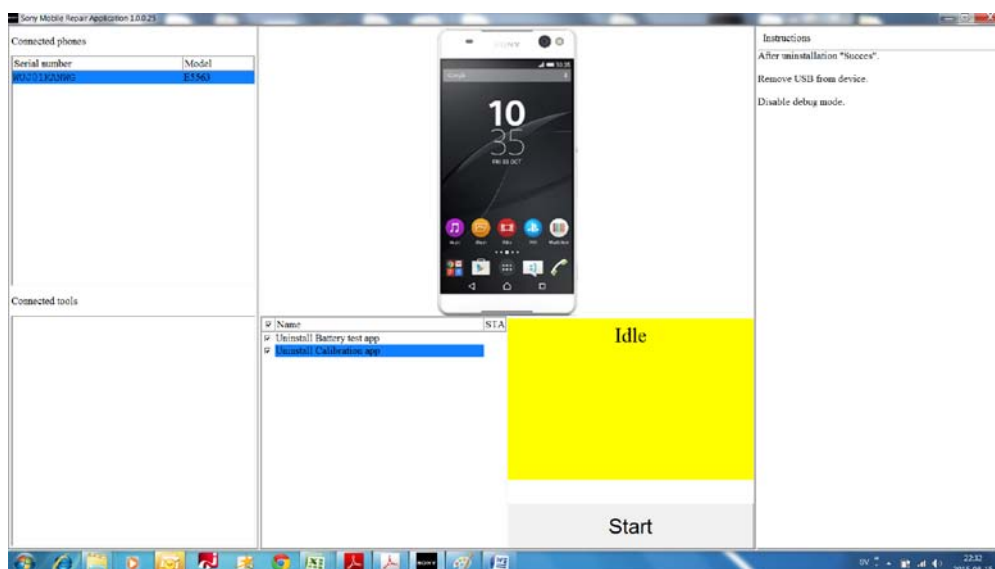


- (3) If "Calibration Pass", then press return twice to leave calibration menu.

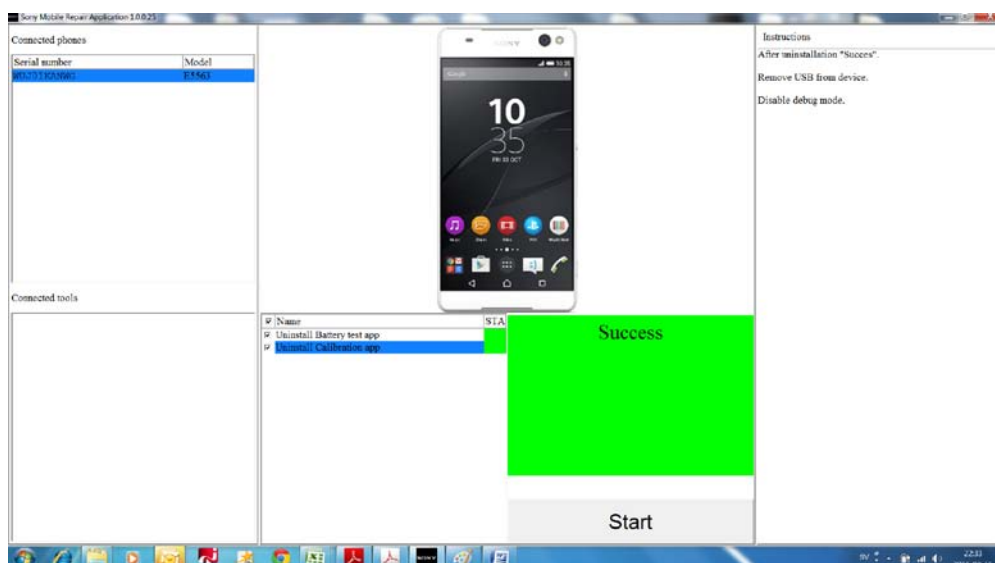
(2)

## 6 Uninstall APK

After calibration connect phone to Sony Mobile Repair Application.



Press **Start** to Uninstall Calibration app.  
When Success Uninstall, then remove USB from device.



## **7            Disable debug mode**

Remember to disable debug mode in phone.